

Welcome to Our Class



**Norma Butler Bossard
Elementary School**



OPEN HOUSE
September 14, 2022

Morning Arrival Procedures

- Parents will continue to drop off their child using the back driveway or front gate.
- Parents must drive through the drop off lanes slowly.
 - Use caution with other drivers and students when going through the driveway... be courteous!
- Please do not block the school's driveway.
- Walkers need to utilize the crosswalk to cross the street.
- Do not drop your child off in the middle of the street.
- Students can only be dropped off from right lane in the drop-off zone.
 - The left lane is for cars exiting the drop off zone only.
- Parents, please note that you may not park in the Faculty/ Staff parking lots
 - Do not park in neighborhood driveways
 - Do not leave your car unattended; Do not leave valuables inside your car (i.e., purses, wallets, etc.)

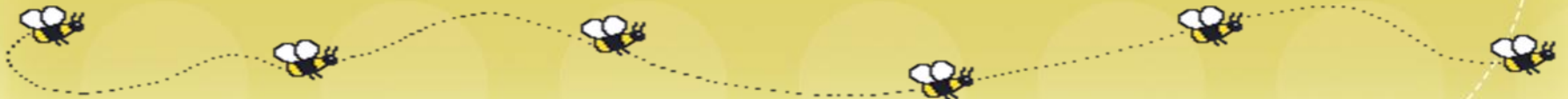


DISMISSAL

Our school day ends at 1:50 p.m.

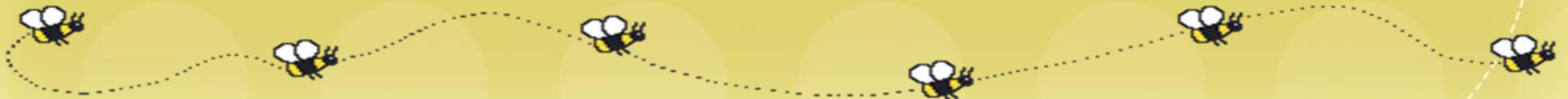


- Per School Board Policy, the early release of students causes disruption to the academic performance of all students and may create safety and security concerns. **Students will not be released within the final 30 minutes of the school day (after 1:20 pm) unless authorized by the Principal or Principal's designee** (i.e., emergency, sickness). Please schedule appointments, etc. accordingly.
- Bus, Story Hour, and After School Care students are picked up from the classroom and taken to their respective locations.
- Parent Pick-Up students will be dismissed by **Driveline** (Main Gate) and **Parent Walk-up** (Near Bike Rack)



DISMISSAL

- Parents, please be advised that you must have the *DRIVELINE dismissal pass* in order for the teacher to dismiss your child.
 - If you forget your dismissal pass, you must go to the main office and receive a written notification to be given to the teacher.
- If you are changing the way your child is going home, **a note must be written** to the teacher, even if it is for just one day.
- After School Care (ASC) offers story hour from 1:50 pm to 2:50 pm for those students who need to wait for older siblings to be dismissed.



School Attendance

- School Board Policy 5200-Attendance

<https://go.boarddocs.com/fl/sbmd/Board.nsf/Public?open&iid=welcome>

- Parents and students are responsible for attendance which shall be required of all students during the days and hours that the school is in session.
- The parent shall report absences to the school as soon as practicable. Failure to report and explain the absence(s) shall result in unexcused absence(s). The principal shall have the final authority for determining acceptability of the reason for the absence(s). **{NOTE: Absences should be reported in writing to your child's teacher in the form of a written note or email (Class Dojo notification is not accepted as official documentation.)}**



School Attendance (cont'd.)

- Attendance Defined
- While enrolled in school, students are expected to:
 - be present at school each and every day.
 - attend class as scheduled.
 - arrive at school and class(es) on time; and
 - demonstrate appropriate behavior and a readiness to learn.
- When a student has been absent three (3) consecutive days and the school has been unable to ascertain the reason for the absences, the absences shall be investigated by the school principal or at any other time if deemed necessary; a medical note may be required after an absence of three (3) consecutive days.



School Attendance (cont'd.)

- Attendance Defined (cont'd.)
- **School Attendance** - Students are to be counted in attendance only if they are actually present for at least two (2) hours of the day or engaged in a school-approved educational activity which constitutes a part of the instructional program for the student.
- **Tardiness** - A student is considered tardy if they are not present at the moment the school bell rings for the class assigned. NOTE: If a student is not present when attendance is taken but is present later in the school day, that student must be considered in attendance, but tardy, and the absence should be changed.
- **Early Sign-outs** – No student shall be released within the final thirty (30) minutes of the school day unless authorized by the principal or principal's designee (i.e., emergency, sickness).



School Attendance (cont'd.)

- Reasonable excuses for time missed at school:
- **Personal illness of the student** (medical evidence may be required by the Principal for absences exceeding five (5) consecutive days). The written statement must include all days the student has been absent from school. If a student is continually sick and repeatedly absent from school due to a specific medical condition, s/he must be under the supervision of a health care provider in order to receive excused absences from school.
- **Court appearance of the student**, subpoena by law enforcement agency, or mandatory court appearance.
- **Absence due to a medical appointment** requires a written statement from a health care provider indicating the date and time of the appointment and submitted to the Principal. **(NOTE: Please try to make appointments after school hours whenever possible.)**



Absences

- All absences are initially unexcused.
 - No make-up work (Unexcused absences do not require that the teacher provide make-up work for the student.)
 - Student receives a “Z” for any grades that day.
- Parents must send in a note to excuse any absence.
 - Refer to the list of excused absences in previous slide.
 - Failure to provide required documentation within three (3) school days upon the return to school will result in an unexcused absence.
- Consecutive absences of 3+ days will require a doctor’s note to be excused.



COVID-19 in 22-23

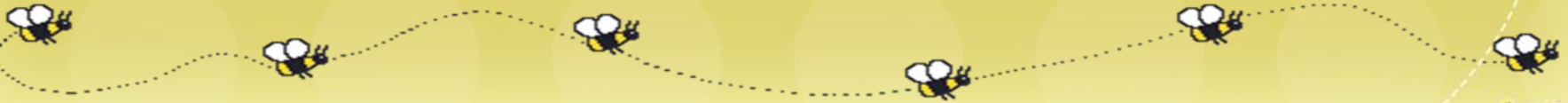
- Parents must report and provide documentation if a child tests positive (in either of these two ways):
 - Home tests (provide picture of test w/ name)
 - Rapid or PCR test results (completed at a testing center or doctor)
- Absences due to COVID-19 are coded differently and are not held against a student (COVID absences are not calculated in the total of other types of absences).
- Without a positive test result, absences will be handled as previously described.



School Forms

- **Emergency Contact Card (needs to be kept updated at all times)**
- **Model and Talent Release Form**
- **Media Release Form**
- Directory Info. Opt Out Form
- Unlisted Telephone Number Form
- Receipt and Review of Code of Student Contact
- Receipt and Review of Parent Handbook
- Responsible Use of Technology by Student Form

Please submit any forms that have not yet been returned to your child's teacher by Friday!



School Uniforms

- **Norma Butler Bossard Elementary is a mandatory uniform school; therefore, your child is expected to wear his/her uniform every day.**
- Our school uniform consists of:
 - **Khaki** shorts or pants for boys
 - **Khaki** shorts, pants, skirts or skorts for girls
 - **Navy blue** or **gold solid/striped** polo shirts
 - Closed shoes or sneakers (no sandals or crocks)
 - Sweatshirts, sweaters, and jackets **MUST** be worn in the uniform colors (**Navy or Gold/Yellow**). They **MUST** be worn over the school uniform (polo shirts underneath and visible under the sweater/jacket).
- Our blue school t-shirt (or any other NBB spirit t-shirt) may be worn on **Fridays** with blue jeans or blue jean shorts of appropriate length (no holes or cuts).
 - **The blue school t-shirt must be worn when students are participating on field trips**



UNIFORM REQUIREMENTS

- Uniforms and other school items can be purchased on the PTA Member Hub at <https://nbbpta.memberhub.com/store>
- The selected uniform or generic options can also be purchased from a variety of uniform companies (such as Ibiley, etc.) or from several department stores (such as Target, Walmart, etc.).
- The school spirit shirt is only sold by our school's PTA via the member hub store above.



Home Learning

- A Home Learning packet will be sent home every **Monday** in your child's Home Learning Folder stating the assignments your child should complete for **each day** of the week.
- Home Learning is used to reinforce concepts taught each day in the classroom and will be checked by the teacher on a daily basis.



Home Learning

- It is important that you check your child's home learning folder each night.
- You must also **initial the home learning log** once all of the homework for each night has been completed by your child.
- The spelling, reading, and vocabulary words that your child should study each week can be found at the bottom of the home learning log. Please review these words with your child each night in order to prepare him/her for assessments at the end of the week.



Home Learning

- A Social Studies or Science study guide will be provided each week in the home learning packet so that your child may review the concepts taught in class each day for the week's content assessments.
- **He/She will also be assigned i-READY Reading and i-READY math lessons to complete each week.**



Home Learning

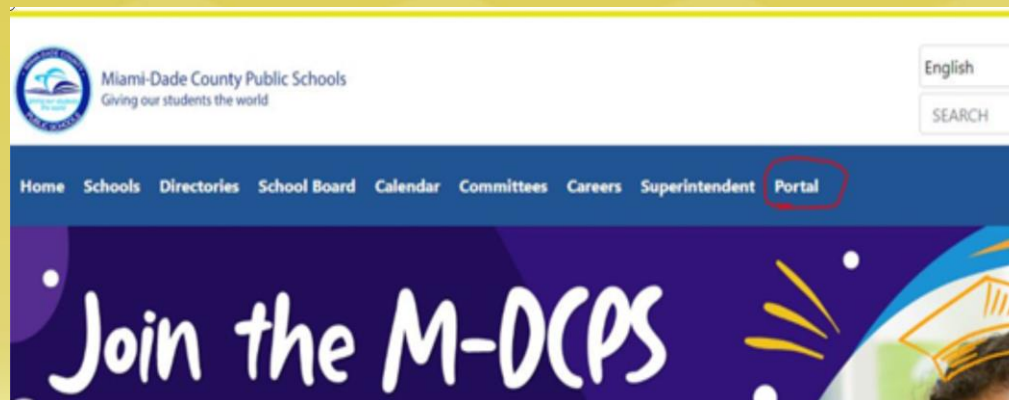
- During special units of study or certain seasons, a family home learning project will be sent home for your family to work on together. Your child will be able to share these projects with the class.
- The Home learning folder will be used as a communication tool between the teacher and the parents. Please check the parent notices section daily. We check HW weekly.



Student Portal

It is important that every child is able to access the student portal. We kindly ask that you teach them how to do this on their own.

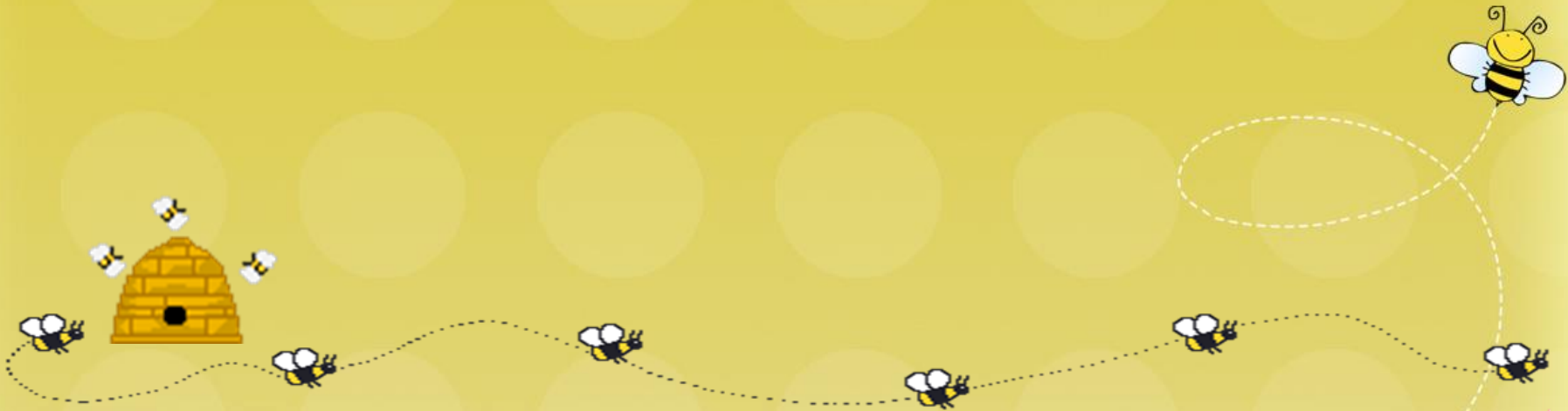
- The District continues to use the mandated single sign-on policy.
 - Students will need to log on to their student portal in order to access i-READY and other district curriculum, including student textbooks.
- To access the student portal, students will go to www.dadeschools.net
 - Find the portal icon.
 - Then, enter his/her user name and password



Items in Book Bag



- Home Learning Folder
- Home Learning Journal



The Florida Standards

What Do They Mean For Teaching and Learning?

B.E.S.T (Reading/L.A.)

- Literacy is achievable through content-rich instruction. Explicit systematic phonics is taught to mastery level in early foundations. Reading comprehension is relevant and pulls from background knowledge. Reading and writing are intertwined with text lists for every grade level.

MAFS

- Deeper understanding of mathematical concepts
- Builds habits of mind of productive mathematical thinkers
- Real-world applications
- Modeling with pictures technology, graphs, manipulatives



The Florida Standards

- Emphasize success in college and careers
- Prepare students with 21st century skills
- Provide more rigorous content and application of knowledge
- Place emphasis on critical and analytical thinking
- Establish clear, consistent guidelines for instruction

What Subjects are Included ?

- (B.E.S.T) Benchmarks for Excellent Student Thinking and Mathematics Florida Standards (MAFS) provide a clear set of goals and expectations
- Define what students should know and be able to do at each grade level – kindergarten through grade 12



Classroom Management Plan



In order to create and maintain a positive learning environment, students must follow our classroom rules.

Classroom Rules

- » Follow directions and listen carefully.
- » Raise your hand to speak.
- » Stay in your seat and work quietly.
- » Be kind and share with others.
- » Keep your hands, feet, and objects to yourself.
- » Keep everything neat and in its place.
- » Always do your best!

Please review these rules with your child. Conduct grades will be based on the observance of these rules.



Classroom Management Plan

- The first time a student misbehaves, he/she will be given a verbal warning. Any misbehavior following this warning will require your child to move his/her name on the classroom behavior chart.
- If a student's behavior becomes a problem in class, a behavior sheet will be sent home requesting a parent's signature. This documentation will be used to determine your child's report card grade in conduct.

*** Please note that if your child's behavior does not improve, this will affect his/her participation in special activities.**



Classroom Management Plan

REWARDS:

- Praise, Treats, Stickers, Treasure Chest, Special Privileges
- Positive notes and/or phone calls home

CONSEQUENCES:

- Each time there is a conduct infraction, the student's conduct drops a letter grade.
- If disruptive behavior continues, a student will lose special privileges, a phone call home will be made, or if necessary, your child will be sent to the main office to speak to a counselor and/or administrator.

**** Please note : Each of you has read and returned the Code of Student Conduct Acknowledgment form so, you are aware of what is expected of our students and the consequences.**



i-READY Diagnostic Assessments

- i-Ready Diagnostic Assessments are conducted **two times** per year to monitor students' progress on the Florida Standards in English Language Arts and Mathematics.
- These assessments are aligned to the Florida Standards, and they monitor student mastery of these standards.
- Based on the results of these assessments, students are assigned individual lessons within the i-Ready program to reinforce skills needing improvement.



STAR Early Literacy

- **STAR** is a formal computer-based assessment which will be administered to students on the subjects of Reading and Mathematics.
- **STAR** will be administered **three times** per year in order to monitor student progress and skill mastery in the areas of Reading and Mathematics.

More Details will be forthcoming via communication Folders



Grading Scale

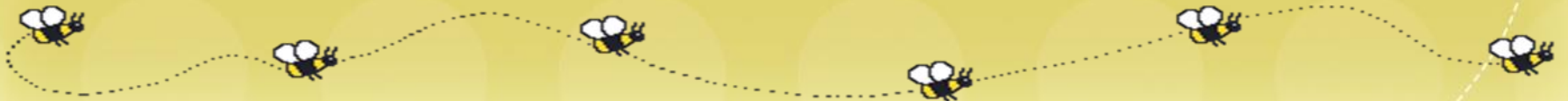
First Grade Grades	Numerical Value	Verbal Interpretation	Grade Point Value
A	90-100%	Outstanding Progress	3.5-4.0
B	80-89%	Above average Progress	2.5-3.49
C	70-79%	Average Progress	1.5-2.49
D	60-69%	Lowest acceptable progress	1.0-1.49
F	0-59%	Failure	0-0.99



Grading

- Students will receive weekly grades in
 - Reading
 - Language Arts
 - EFL
 - Math
 - Content –Science and Social Studies
 - PE
- Art and Music for Kinder and 1st grade students will be provided by the classroom teacher through an interdisciplinary approach, taught within the core subject areas of reading/language arts, mathematics, science, and social science.

Please check the parent portal to see how your child is doing each week in class.



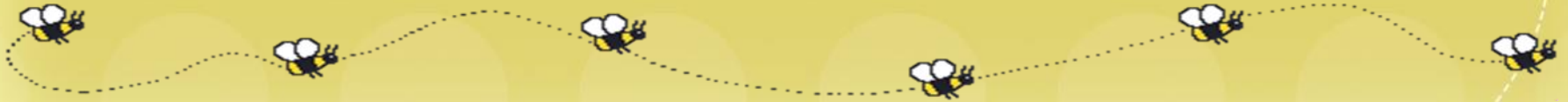
General Information

- Breakfast is served free daily.
- This year, lunch is also free for all students.
- Birthday Celebrations
Cupcakes or donuts are allowed during lunch.



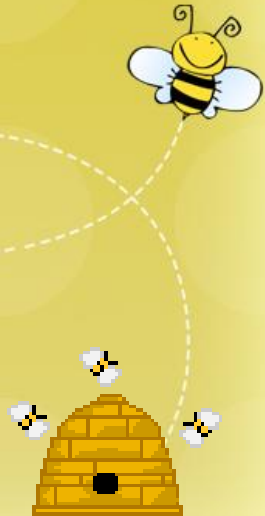
Electronic Notifications & School App

- The District Electronic Grade Book provides automated email notifications to parents and students who subscribe for this service.
- Parents and students who wish to start receiving automated email subscriptions can do so via the Electronic Grade Book link in the parent or student portals.
- Registration instructions, demonstration videos and a description of all notifications can be found on the PIV resources page at:
<http://gradebooksupport.dadeschools.net/piv-resources.asp>
- **School App**
 - FREE! (Please download to receive important updates, view upcoming events, email your child's teacher, etc.)



Tips for Parents

- Please visit our school website:
 - <http://bossard.dadeschools.net/>
 - Click on the *Parents* tab, and then on *Open House* for additional resources.
- Parent Academy
 - <http://theparentacademy.dadeschools.net/>



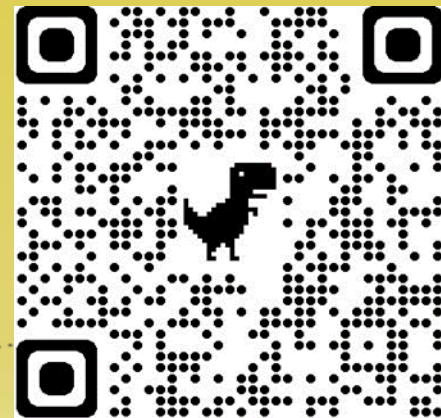
REMINDERS

PTA

Parent Teacher Association

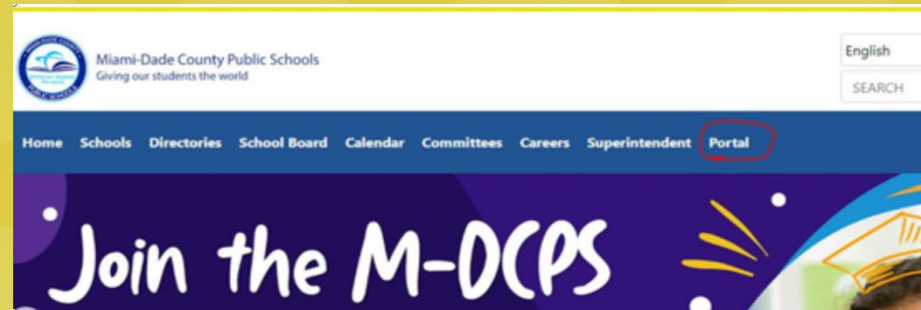
- We ask that you please join the PTA. Membership helps support students, teachers, and the school. Membership fee is \$10.00 per person.

<https://nbbpta.memberhub.com/store/items/119859>



Volunteer Information

- Please visit the www.dadeschools.net and apply to be a volunteer in your child's school.



- All volunteers must be cleared before volunteering in school activities.
- All cleared volunteers must wear their NBB Friday t-shirt when volunteering for any event.



Contact Information

- Phone Number: (305) 254-5200



Questions??

